



# CordisPulse

## January 2022

Welcome to January's edition of the CordisPulse – a monthly digest of key research and policy developments across the sectors in which Cordis Bright provides research and consultancy services, i.e. adult social care and health, children and young people's services, and criminal justice.

During January we were pleased to produce the latest findings from two independent analyses which we produce every year.

The first is the [Looked After Children Stress test](#). This uses publicly available data to examine recent trends in the numbers, rates and spend on looked after children (LAC) in England. A flavour of findings includes:

- Total spending by local authorities on LAC services has increased by 71% since 2012, from £3.083bn to £5.278bn in 2020.
- Over this period, spending on LAC also absorbed an increasing proportion of total spend on children's services, from 36% in 2012 to 50% in 2020.
- The number of LAC being placed more than 20 miles away and outside the local authority boundary has increased from 8,000 in 2012 to 12,520 in 2020, an increase of 56.5%.

For more findings and interpretation please [click here](#).

The second is the [Child and Adolescent Mental Health Services \(CAMHS\) stress test in England](#). It presents a national picture and then examines how these trends vary by local area. Clinical Commissioning Groups (CCGs) are often experiencing different pressures to the national average: we aggregate 13 indicators to identify those which we think are experiencing the most pressures. A flavour of findings includes:

- The number of open referrals in children and young people mental health services at the end of each November has seen a major increase of 126% over



the past five years, from 152,011 open referrals at the end of November 2016 to 344,178 in November 2020.

- The planned spend for CCGs on children and young people mental health services has increased from £614m for 2017/18 to £872m for 2020/21. This is an increase of 42%.

For more findings and interpretation please [click here](#).

If you would like to discuss any of the issues raised in this month's Pulse, please do contact us on 020 7330 9170 or email [stephenboxford@cordisbright.co.uk](mailto:stephenboxford@cordisbright.co.uk).

Best wishes,

Dr Stephen Boxford

Head of Research

If you would prefer not to receive future editions of the CordisPulse, please click 'unsubscribe' at the very end of this email. If you would like to discuss anything that arises from the Pulse (or if there are others who you think would like to receive copies) then please contact Dr Stephen Boxford on [stephenboxford@cordisbright.co.uk](mailto:stephenboxford@cordisbright.co.uk) or 020 7330 9170.

---

Cordis Bright Ltd, 23/24 Smithfield Street, London, EC1A 9LF.

Telephone: 020 7330 9170

Email: [info@cordisbright.co.uk](mailto:info@cordisbright.co.uk)  [@CordisBright](https://twitter.com/CordisBright)  
Website: [www.cordisbright.co.uk](http://www.cordisbright.co.uk)  [Cordis Bright](https://www.linkedin.com/company/cordis-bright)



## **Cordis Bright News**

### **CYP Now Conference 'Safeguarding in the digital age'**

Cordis Bright will be taking part in the CYP Now Conference 'Safeguarding in the digital age' on Thursday 27 January. Hannah Nickson and Suzie Langdon-Shreeve will present key findings from research conducted for the DfE around safeguarding and radicalisation responses in Children's Social Care. They will discuss the increasing concerns around online influencers radicalising young people to right wing extremism and mixed/unclear ideologies, and good practice examples of effective multi-agency practice in responding to radicalisation. The full DfE report can be accessed [here](#). You can view the conference programme and book tickets [here](#).

### **Looked after children services stress-test**

We have recently published our looked after children services stress-test for 2021. This uses publicly available data to examine recent trends in the numbers, rates and spend on looked after children (LAC) in England. The first section presents national trends from 2012 to 2020. The second section examines trends across local authorities. As part of this, it highlights those local authorities that we think, from the data, may be experiencing the most pressures in catering for LAC. We also highlight local authorities that may be sites of effective practice.

### **CAMHS stress-test**

This is the second year we have produced a stress-test looking at Child and Adolescent Mental Health Services in England. The analysis presents a national picture and then examines how these trends vary by local area. Clinical Commissioning Groups (CCGs) are often experiencing different pressures to the national average: we aggregate 13 indicators to identify those which we think are experiencing the most pressures.

## Adult Social Care and Health

### Reports

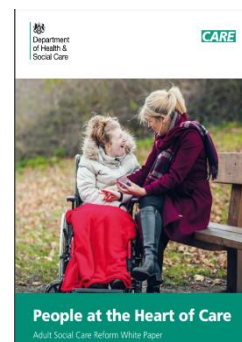
#### Department of Health and Social Care. People at the Heart of Care: Adult Social Care Reform White Paper.

People at the Heart of Care sets out a 10-year vision for how the Department of Health and Social Care aims to implement policy in support and care in England. This is centred around three objectives:

- People have choice, control, and support to live independent lives.
- People can access tailored care and support.
- People find adult social care fair and accessible.

To achieve these three objectives across the 10-year plan, this report sets out a range of policies that Department of Health and Social Care will work with the sector and those who draw on care and support to implement over the next three years. These include:

- At least £300 million to integrate housing into local health and care strategies, to provide choice of alternative housing and support options.
- At least £150 million of additional funding to drive greater adoption of technology and achieve widespread digitisation across social care.
- At least £500 million for training and qualifying social care workforce.
- A new practical support service to make minor repairs and changes in peoples' homes to help people remain independent and safe in their home.
- Up to £25 million to work with the sector for services provided to support unpaid carers.
- £30 million to help local areas innovate around the support and care they provide in new and different ways, providing more options that suit peoples' need and individual circumstances.
- A new national website to explain the upcoming changes and at least £5 million to pilot new ways to help people understand and access the care and support available.
- More than £70 million to increase the support offer across adult social care to improve the delivery of care and support services, including assisting local authorities to better plan and develop the support and care options available.



## Department of Health and Social Care. Adult Social Care workforce survey: December 2021 report

This report documents key findings from the responses collected by the Department of Health and Social Care from almost 9,000 adult social care settings in England through the workforce survey. This represents a response rate of 27% of all Care Quality Commission (CQC)-registered care homes and 44% of all CQC-registered domiciliary care providers.

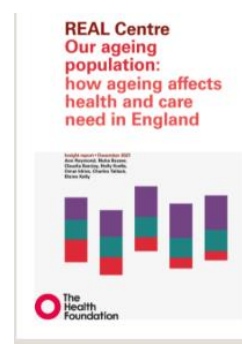
Most respondents to the survey reported an increase in challenges over the last 6 months in the 4 key areas of:

- Recruiting staff,
- Retaining staff,
- Staff morale,
- Accessing agency staff.

Other findings included that those positions reported as being hard to recruit were also reported as hard to retain. For domiciliary care providers the role most commonly reported as challenging to recruit and to retain was 'personal assistant or home care worker'. For care homes this was 'senior care worker'. The main reason given for these shortages is that respondents feel pay and working conditions in the care sector are uncompetitive, when compared to outside sectors. Vaccination as a condition of deployment was also cited as a potential issue for care homes.

## The Health Foundation. Our ageing population. How ageing affects health and care need in England.

This report explores the complex relationship between how health and care needs change with age, how the relationship between need and age has changed over time and how long-term conditions and social care needs interact within England's ageing population. This report examines what this means for policymakers and system leaders by analysing changes in an estimate of social care need, drawn from the English Longitudinal Study of Ageing (ELSA), and the prevalence of long-term conditions, as a proxy for health and health service demand.



The report includes five key insights for policymakers and system leaders. These include that an ageing society does not inexorably lead to comparable increases in the number of people with social care needs and highlights the complexities involved in predicting future demand for health and social care based on demographic changes.

## Care Quality Commission. Restraint, Segregation & Seclusion review: Progress report

This report comments on the progress of the Care Quality Commission's Out of Sight – who cares? report, which focused on the use of restraint, seclusion and segregation in care services for people with a mental health condition, a learning disability or autistic people. The Care Quality Commission highlight that although much progress has been made by the health and care system action to understand the needs of people with a learning disability and autistic people in inpatient units, there is still much to be done to improve their health and care experiences. The findings of this report show that: there are still too many people in inpatient hospital wards and when admitted, some people are spending too long in hospital and discharge can be very slow and well over 2,000 mental health inpatients were reported to have been subject to restrictive interventions in August 2021. The Care Quality Commission argue that these findings indicate that more appropriate housing provision, with a workforce in place who have the right skills to support people are urgently needed.

## Local Government Association. Must Know: Loneliness – Is your council actively tackling loneliness?

This report addresses loneliness and social isolation as a growing public health priority. The LGA highlights the growing body of research showing that loneliness is a serious condition which can have a harmful effect on individuals' physical and mental health, as well as bringing costs to public finance, particularly health and social care, and to the economy. The report also addresses the role that councils have to play in reducing the incidence of loneliness and social isolation through a strategic approach which identifies patterns of loneliness, levels of need and community assets. Particularly how they can utilise their knowledge of the local community to bring together partners and lead projects within community spaces. The report concludes that these local based interventions to tackle loneliness can be both successful in terms of outcomes for individuals and cost effectiveness.



## Briefings

### Department of Health and Social Care. Our vision for the Women's Health Strategy for England.

The Department of Health and Social care have published their Vision for Women's Health, which sets out key government commitments on women's health and inequality, while recognising the system-wide changes needed to tackle some of the issues raised, to be addressed by the upcoming Women's Health Strategy in Spring 2022. To take immediate action to protect

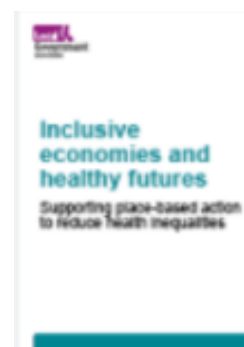


women and girls from harm, the vision document also sets out the department of health and social care's intention to introduce legislation to ban hymenoplasty at the earliest opportunity.

## Tools and Guidance

### **Local Government Association. Inclusive economies and healthy futures: Supporting place-based action to reduce health inequalities.**

This guide covers how local governments can build a more inclusive, healthy and prosperous economy in their local area. This guide provides information on how health and wellbeing relate to inclusive growth; why local councils and their partners may wish to plan interventions to address these issues together; the wider policy context within which interventions would be planned; and examples of the concepts and considerations local councils and their partners must consider when implementing an intervention. It also highlights some resources that local councils and their partners might find helpful.





## Children and Young People's Services

### Reports

#### **National Foundation for Educational Research. Special schools' and colleges' experience of the Covid-19 Pandemic: Summer 2021**



This study reports the effects the pandemic has had on pupils with Education, Health and Care Plans (EHCPs) according to Headteachers. A representative survey of Headteachers in special schools and colleges in England was undertaken, followed by depth interviews with a sample of Headteachers and parents of pupils in these settings. Headteachers from special schools and colleges reported that their pupils:

#### **Special schools' and colleges' experiences of the covid-19 pandemic: Summer 2021**

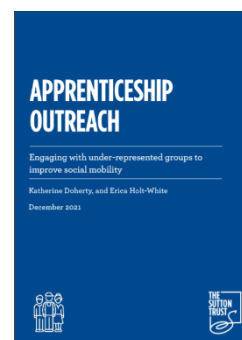
Full findings  
December 2021  
Amy Skipp, Claire Tyers, Vikki Howard, ASK Research  
Emma Pitt, Caroline Sharp, NFER  
Mark Whelan, UCL, Institute of Education, ISE

- Have gone without therapeutic, respite and care services, with over a third of pupils not receiving their legally required input at the end of the 2020/21 academic year.
- Have experienced a wide range of developmental losses. Pupils were 4-5 months behind where they would have been expected to be (had it not been for the pandemic disruption) in their communication and social skills; independence and self-care; and physical development.
- Have struggled with their mental wellbeing - almost 1 in 10 settings said overall their pupils were 12 months or more behind where they should have been.
- Experienced effects on their academic progress, with headteachers rating them as being, on average, 4 months behind where they should have been in literacy and numeracy, which is greater than effects reported for pupils in mainstream.
- These reported effects were all greater in settings with higher rates of Free School Meal eligibility.

The report concludes that the SEND sector needs bespoke support and additional resource in order to recover from the pandemic and continue to support pupils in the ways it knows are effective.

#### **The Sutton Trust. Apprenticeship Outreach: Engaging with under-represented groups to improve social mobility.**

The Sutton Trust reports that access to apprenticeships for young people and those from disadvantaged backgrounds is an ongoing problem, particularly among the most sought-after apprenticeship opportunities. This report examines apprenticeship outreach and offers employers advice on how to target and improve their take up among young people from disadvantaged backgrounds. The research finds that spending on apprenticeship outreach appears

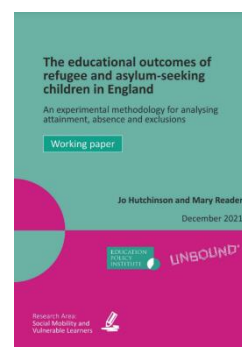


to be very low and there is still a disconnect between the employer experience and the school experience of working together to enhance young people’s knowledge and awareness of apprenticeships. To support more effective outreach, this report includes tips for employers on how best to encourage more young people, particularly those from lower income backgrounds, to take up apprenticeships. These include:

- Clearly highlighting and offering work placements to students as a first step to engagement.
- Providing information on salary and career opportunities, as well as on the grade requirements to access apprenticeships and information on the application process.
- Tracking and monitoring the socio-economic make-up of the workforce so employers know who to target outreach towards.
- Partnering with organisations with good links to schools and colleges to improve the impact of outreach.
- Start outreach early so students are fully aware of which subjects are relevant to specific sectors and what grades they need to access apprenticeships.

**Education Policy Institute. The educational outcomes of refugee and asylum-seeking children in England.**

In this working paper, the Education Policy Institute utilise a new method for identifying the records of children most likely to be refugees or asylum-support recipient children and then use that method to estimate their outcomes in relation to attainment, absence and exclusion from school. This research finds that asylum-seeking children who enter the UK separated from their parents are on average three years (37.4 months) behind non-migrant children at school by the time they take their GCSEs. This attainment gap is estimated by this research to be similar in size to gap for pupils with special needs and disabilities who have the most severe needs.



**The Bevan Foundation. A snapshot of poverty in Winter 2021.**

The Bevan Foundation’s Snapshot of Poverty survey from December 2020 and May 2021 showed that low-income households, renters, disabled people, lone parents, and adults aged between 25 and 64 have all been more likely to cut back on essentials or to fall into debt than other groups. The findings of this reports indicate a deteriorating situation with more households struggling to make ends meet than when the last survey was undertaken in the summer. Among the key findings of the report are:



- Households are struggling to make ends meet – Nearly four in ten Welsh households do not have enough money to buy anything beyond everyday items.
- Incomes are still falling but not for everyone.
- Living costs are still rising.
- Living standards are being squeezed – Low-income households, renters, disabled people, lone parents, and adults aged between 25 and 64 more likely to have had to cut back on everyday essentials than other groups.
- More than one in five families with children have had to cut back on items for children including books, toys, nappies and clothing, whilst one in ten families with two children have had to cut back on food for children.
- Personal debt is a major problem.
- More than one in twenty households are worried about losing their home over the next three months.
- There is broad public support for taking action to ease the pressure felt by struggling households.

## Briefings

### NSPCC. Harmful Sexual Behaviour: Learning from case reviews.

This briefing is a summary of risk factors and learning for improved practice around harmful sexual behaviour based on learning from 12 case reviews published since 2018, where harmful sexual behaviour was highlighted as a significant issue. The NSPCC highlights how published case reviews show that professionals can find it difficult to respond appropriately to harmful sexual behaviour (HSB) for a variety of reasons. The learning from this review highlights:

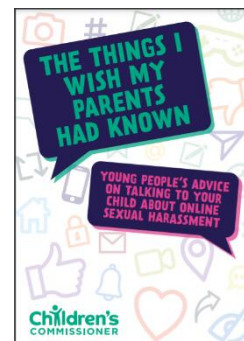
- That HSB should be recognised as a potential indicator of abuse.
- Practitioners should work together to look for the reasons behind a child's behaviour and consider appropriate child protection responses.
- Using a child-centred approach that considers the complex needs and individual lived experiences of all children and families involved
- Carrying out holistic, multi-agency assessments that assess the different needs of children and take wider contextual information into account.



## Tools and Guidance

### Children's Commissioner. Talking to your child about online sexual harassment: A guide for parents.

This guide serves as an entry point for parents and carers who want to talk to their children regarding online sexual harassment but need a bit of support to understand the issues and to start a conversation. The guide utilised the views of 16-21 year-olds on what they think parents should know, and what they should say to their children when talking about sexualised bullying and the pressures of growing up online. This provides information on how sexual harassment and peer-on-peer abuse happens online – including on social media, messaging, gaming and dating platforms. It also explores how content which children are stumbling across and consuming online – including pornography – drives harmful attitudes and behaviours.



## Criminal Justice

### Reports

#### Ministry of Justice. Prisons Strategy White Paper.

This white paper sets out the Ministry of Justice's strategy aiming to cut crime, establish a prison estate designed to rehabilitate prisoners and reduce reoffending. This 10-year plan is to focus on:

- Building the next generation of prisons, delivering 20,000 additional prison places by the mid-2020s.
- Prison and probation services which cut crime and protect the public, strengthening the supervision of ex-offenders in the community and monitoring them more closely after they are released from prison, engaging prisoners with activity such as education and preparing for employment in custody; and providing targeted resettlement support both pre-release and as individuals transition into the community.
- A prison estate that is safe and secure for staff and prisoners, investment of £100 million in Security Investment Programme we will continue to take a zero-tolerance approach to the flow of drugs and other contraband into prisons and ensure prisoners are unable to continue criminal activities whilst in prison; and we want to re-focus how staff, the built environment and regime of daily activities work together to provide the right conditions to prevent mental health and substance misuse problems, so that safety is not a barrier to a stable prison environment and prisoner rehabilitation.

#### Home Office. The economic and social cost of child sexual abuse.

This report provides an estimate of the financial and non-financial (monetised) costs relating to all children who began to experience contact sexual abuse, or who continued to experience contact sexual abuse, in England and Wales in the year ending 31st March 2019. This is estimated to be at least £10.1 billion (in 2018/19 prices). This estimate includes the costs of this cohort being victimised in previous and future years, in addition to lifetime consequences as a result of experiencing child sexual abuse (CSA).

#### Clinks. Maternal Imprisonment.

This evidence review provides an in-depth look at the issue of maternal imprisonment and the impact of this imprisonment on the children affected, the mothers themselves and the family members (typically grandmothers) who take over childcare responsibilities. Dr Lucy Baldwin reviews the current evidence-base and covers a number of key issues:

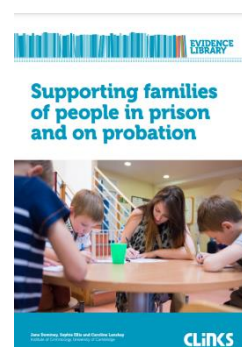
- The extent of maternal imprisonment in the UK and the numbers of children affected.



- The impact on children.
- The impact on mothers, both in prison and on release.
- The impact on family carers and family relationships.
- The response of the criminal justice system.
- Recommendations for change.

### **Clinks. Supporting families of people in prison and on probation.**

In recent years there has been increased interest from policy makers, researchers and practitioners in the role that the family can play to help prisoners survive the pains of imprisonment and resettle successfully. There has been much less interest on the impact of criminal justice involvement on the families of people in prison and on probation. The team from the Institute of Criminology assemble the up-to-date evidence on this impact in an analysis complete with critical success factors of approaches designed to mitigate these difficulties. This review covers a wide range of issues including:



- How imprisonment is viewed through the eyes of family members.
- Five key areas of impact: sustaining relationships; communication and information; economic disadvantage; health impacts; and exclusion and stigma.

The discussion of each impact area includes signposting to best practice guides and helpful resources.

### **Women's Aid. Mental Health & Domestic abuse: A review of the literature.**

This literature review presents an overview of available evidence around domestic abuse, mental health and trauma in the United Kingdom. Reviewing 64 publications with a focus on the UK, the literature review concludes with 5 key findings:



- Domestic abuse is a major driver of women's mental ill health.
- While there is clear evidence that the trauma of being subjected to domestic abuse has negative consequences on survivors' mental health, this is often poorly understood by health practitioners. Problematically, the focus becomes on what is 'wrong' with the survivor and the cause (domestic abuse) is side-lined or overlooked.
- Survivors experience domestic abuse and health responses to domestic abuse within a wider context of structural oppression. Sexism, racism and other

intersecting forms of structural inequality and discrimination perpetuate health inequalities and create barriers to survivors accessing mental health support.

- Specialist domestic abuse services (including partnership work with healthcare professionals) are an important part of the response to survivors' mental health needs, but these services are often under-funded. For specialist services 'by and for' minoritised groups of survivors, this underfunding is even more acutely felt.
- Perpetrators weaponise survivors' mental ill health as part of their coercive and controlling behaviour and as a way of discrediting survivors.

### **Women's Aid. Reframing the Links: Black and minoritised women, domestic violence and abuse, and mental health.**

This review was published alongside Women's Aid's Mental Health & Domestic abuse literature review, to recognise Women's Aid's aim to centre the needs of survivors facing multiple forms of oppression and the services that support them. This literature review focuses specifically on the literature around Black and minoritised women, mental health and domestic violence and highlights some salient points that have emerged from this critical review of the literature and those most relevant to informing future developments in services. These are organised around:



- Evidence of the linkage between DVA and mental health/wellbeing for Black and minoritised women.
- Barriers facing Black and minoritised survivors attempting to access support for mental health/well being in the context of DVA.
- Support valued by survivors in the recovery of their mental wellbeing from 'by and for' Black and minoritised organisations and specialist women's services.

## **Tools and Guidance**

### **Ministry of Justice. Independent Human Rights Act Review.**

This Review was set up to consider how the Human Rights Act is working in practice and whether any change is needed. The Ministry of Justice established the Independent Human Rights Act Review in December 2020 to examine the framework of the HRA, how it is operating in practice and whether any change is required.