

Extract

Cordis Briefing

February 2024

 Follow @cordisbright





Extract

Adult Social Care Expenditure Data 2022/23

Julian Beach

Introduction

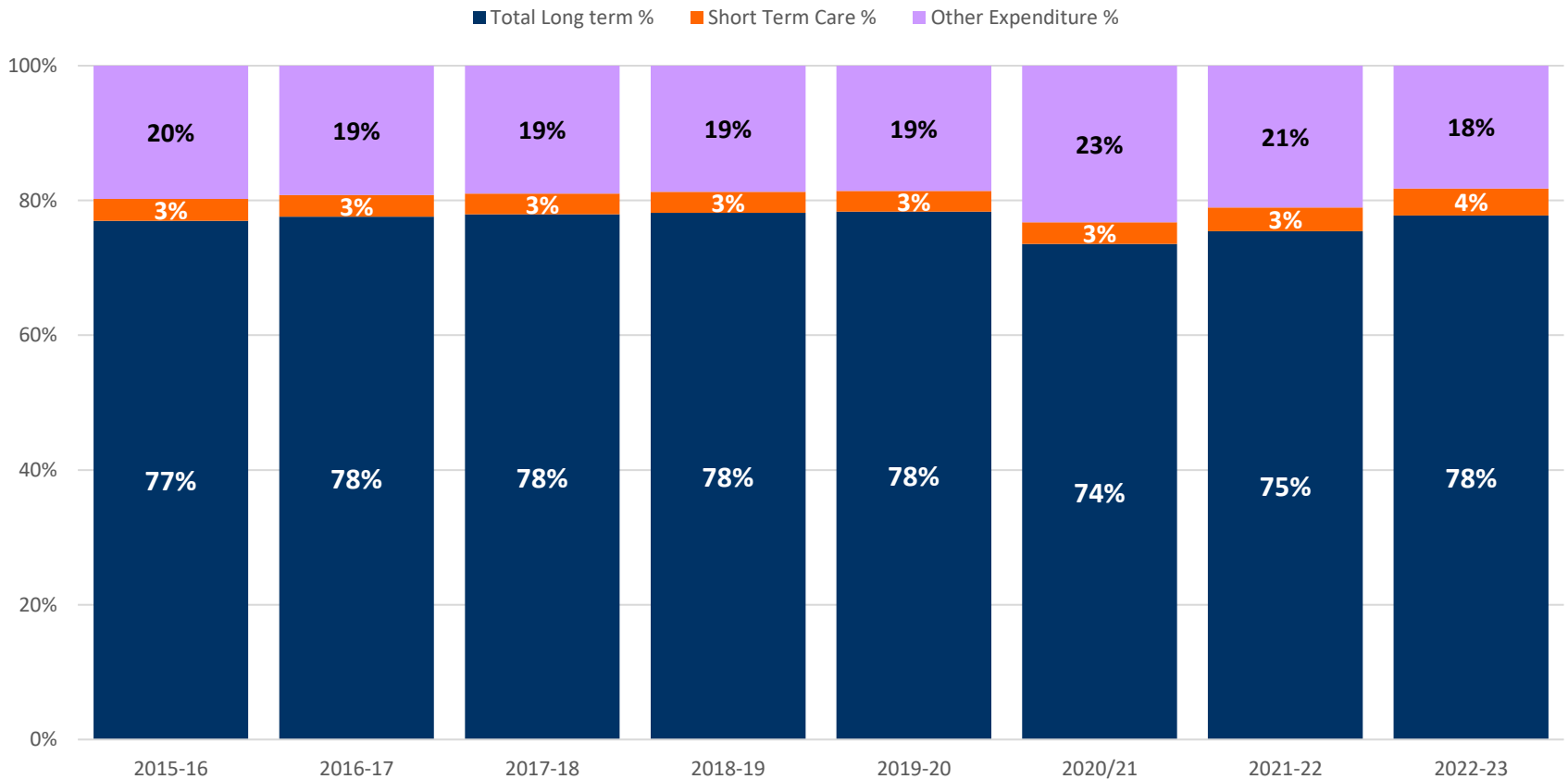
- This is our annual look at local authority financing of adult social care, based on the ASC-FR data published in October 2023.
- Later on in the briefing, we will look at the figures that have come out of the Fair Cost of Care exercises undertaken by all local authorities up to October last year, and published at the beginning of March.
- In the data, Hackney, Swindon, Tower Hamlets and Hillingdon were missing at least some data.

Highlights for 2022-23

- The gross expenditure on adult social care was £23.7 billion, an increase of £1.7 billion, which is an 8% increase in cash terms compared to a CPI rate of 10% in the year to March 2023.
- The data are split between **Short Term** and **Long Term** care. Short term care (referred to as Short Term Care to Maximise Independence – ST-MAX) is designed for a time-limited period, with the aim of reducing or removing the client's need for ongoing care. Long term care has no fixed time period and is delivered for as long as required.
- **Long term care expenditure** increased by 11%, compared to an increase of 24% in **short term care**. There was a reduction of 7% in other ASC expenditure.
- Long term care accounted for 95.1% of direct care expenditure, an decrease of 0.5% from 95.6% last year.

Social Care Expenditure by Type

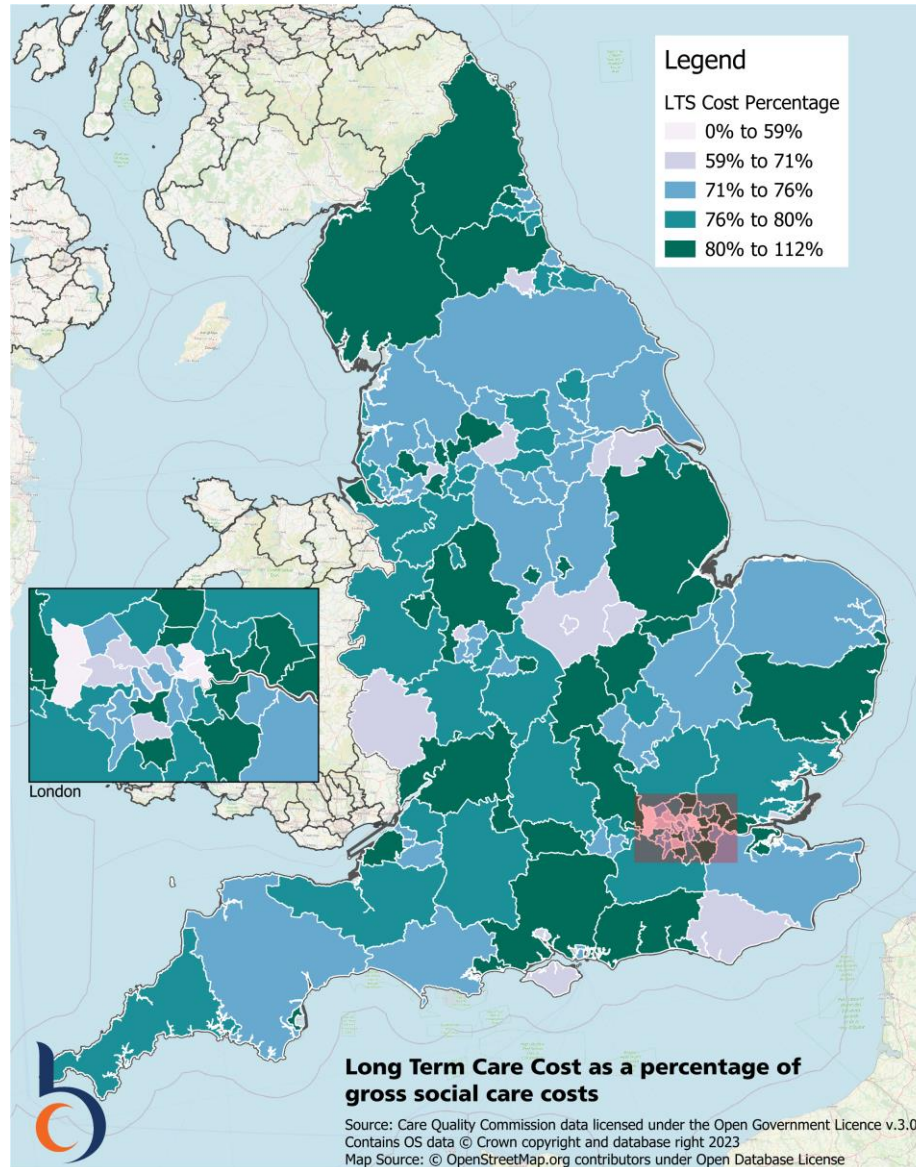
Short Term, Long Term and Other Care Expenditure 2025-2023



Social Care Expenditure - LTS



Extract





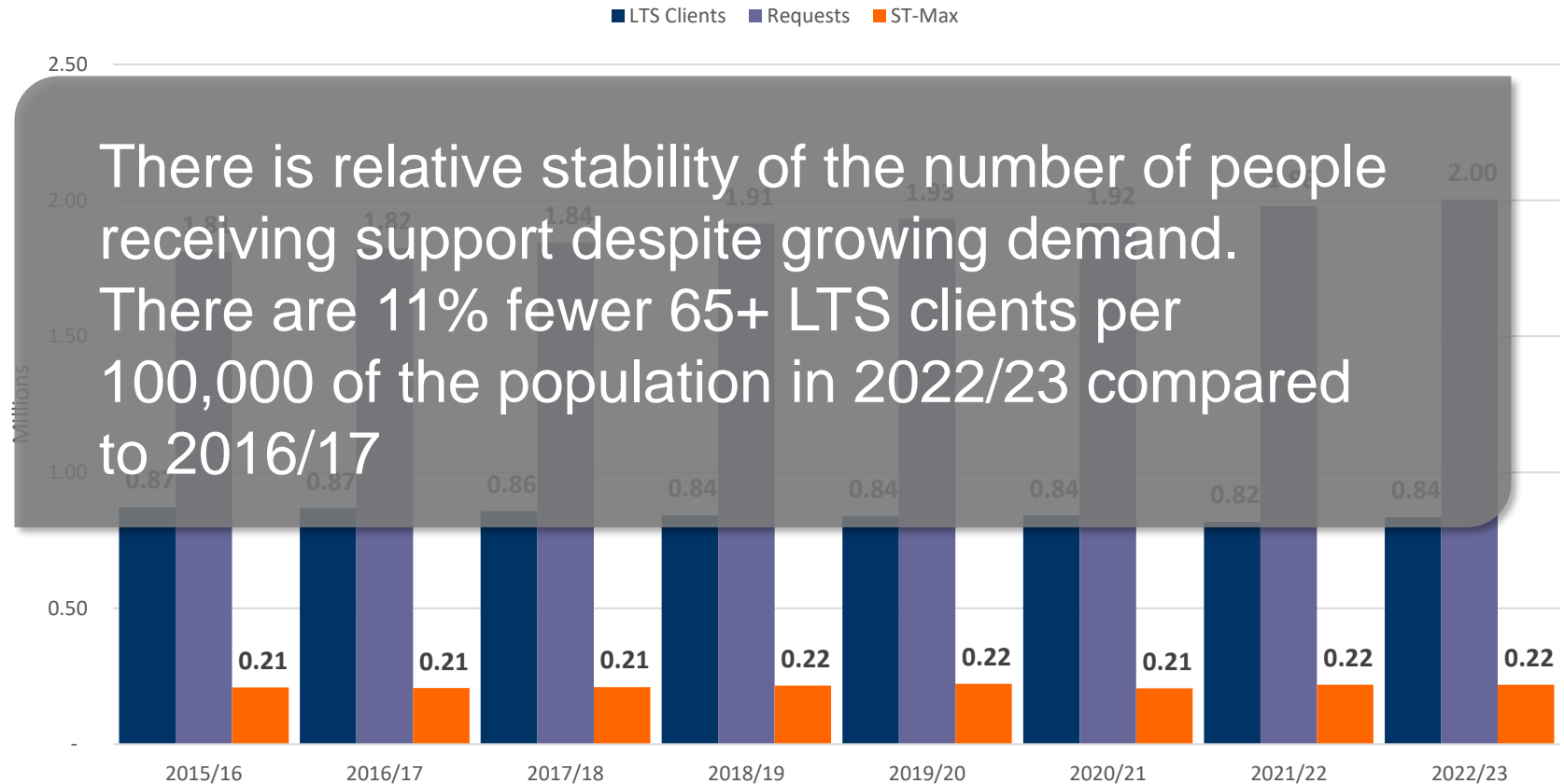
Highlights for 2022-23

- 835,335 clients were supported in Long Term Care during 2022/23, an **increase** of 2.1% from 2021/22.
- The number of requests for support increased to 2 million, or 1.2%, the first time there has been an increase in people receiving long term support for some years.



Long Term Support Clients and Requests for Support

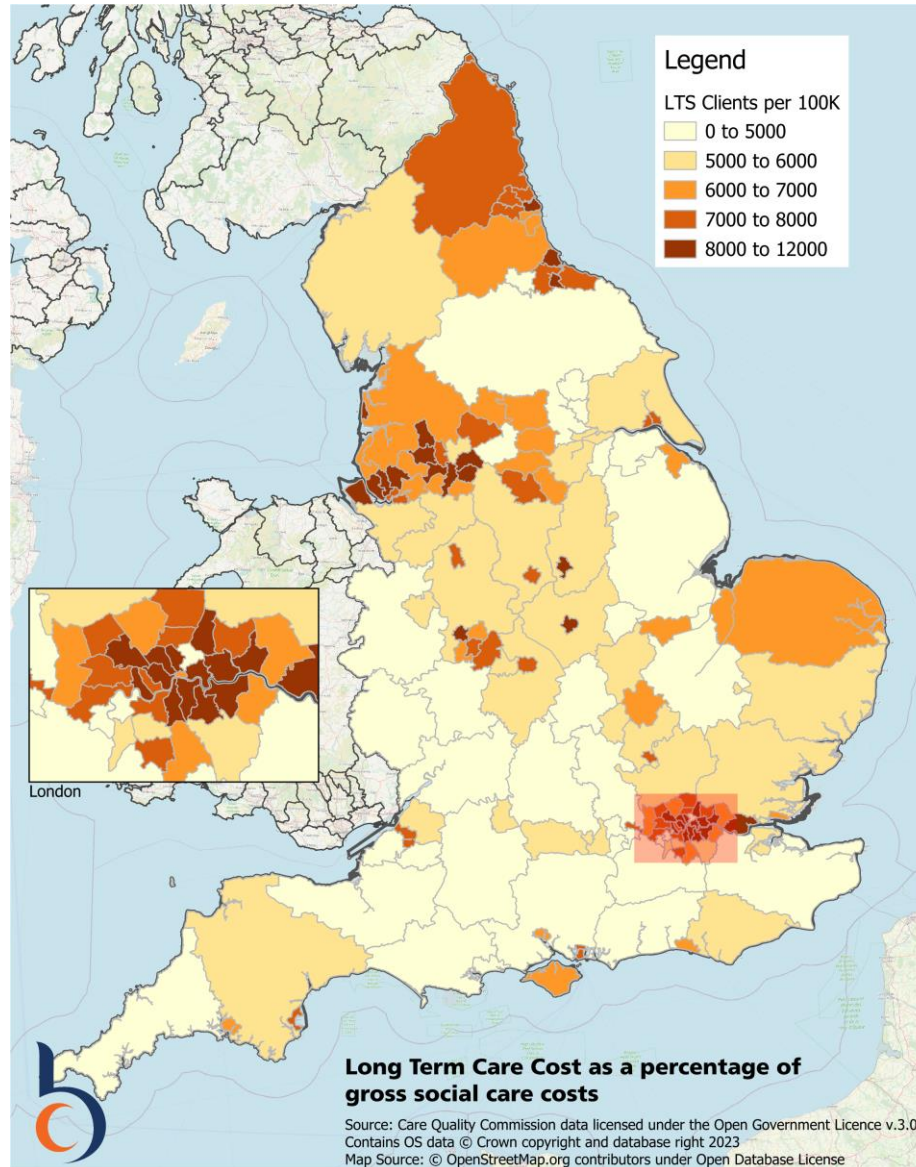
Long/Short Term Clients and Requests for Support 2015-23



Long Term Care Clients / Population



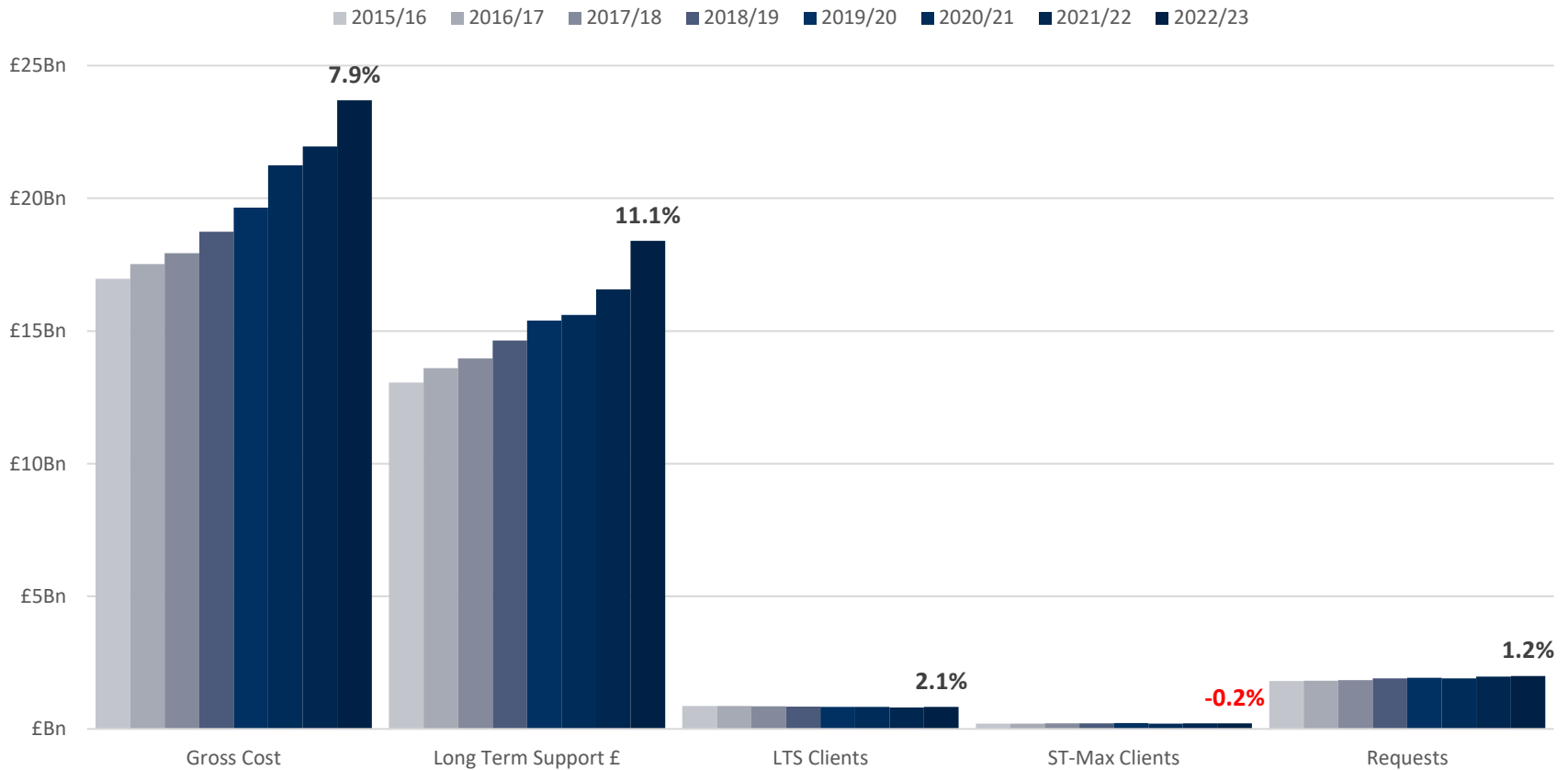
Extract





PSS Trends 2015/16 to 2022/23

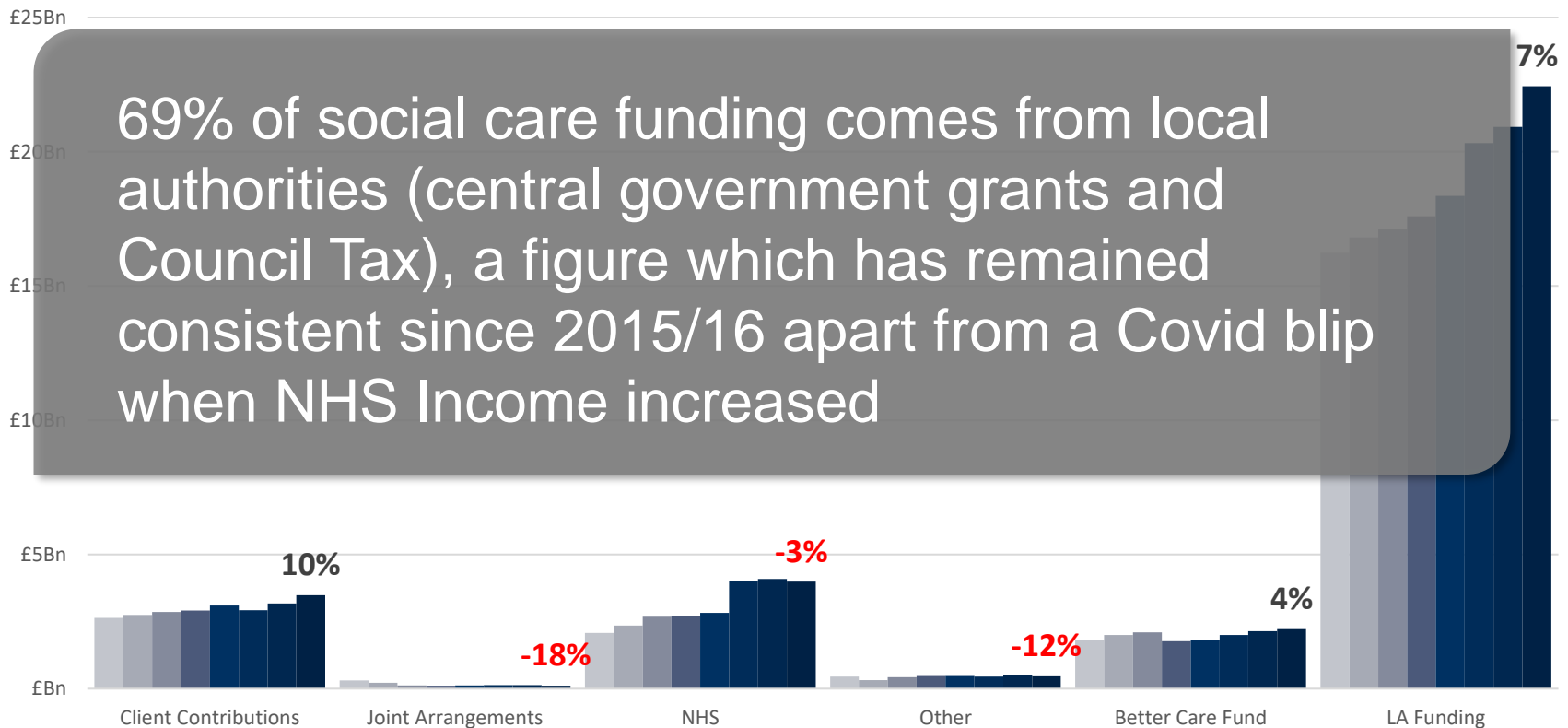
PSS Trends 2015-23



Income 2014/15 to 2022/23

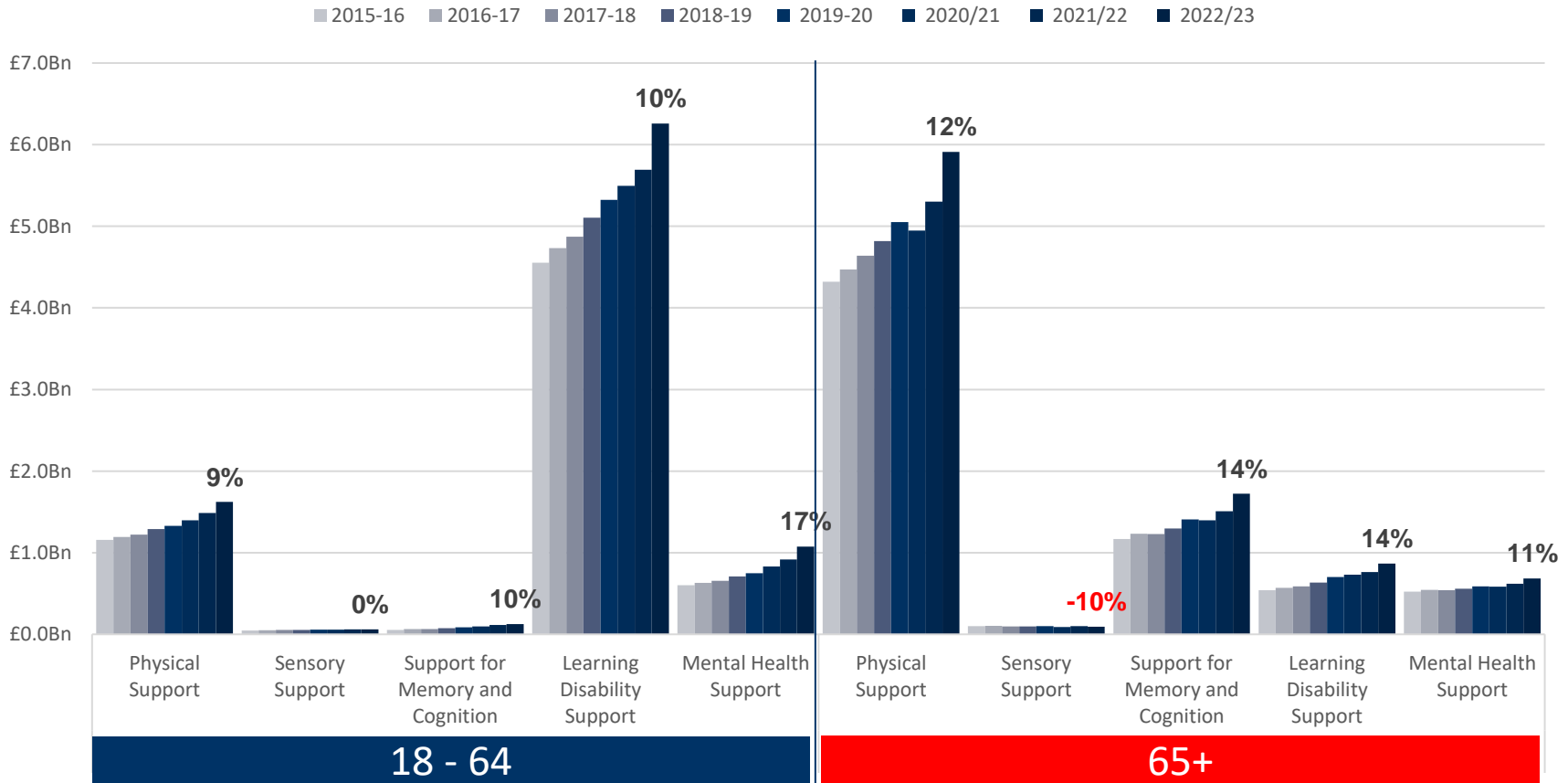
Social Care Income Sources 2014-23

2015/16 2016/17 2017/18 2018/19 2019/20 2020/21 2021/22 2022/23



Long Term Care Cost Changes

Long Term Care Costs





Extract

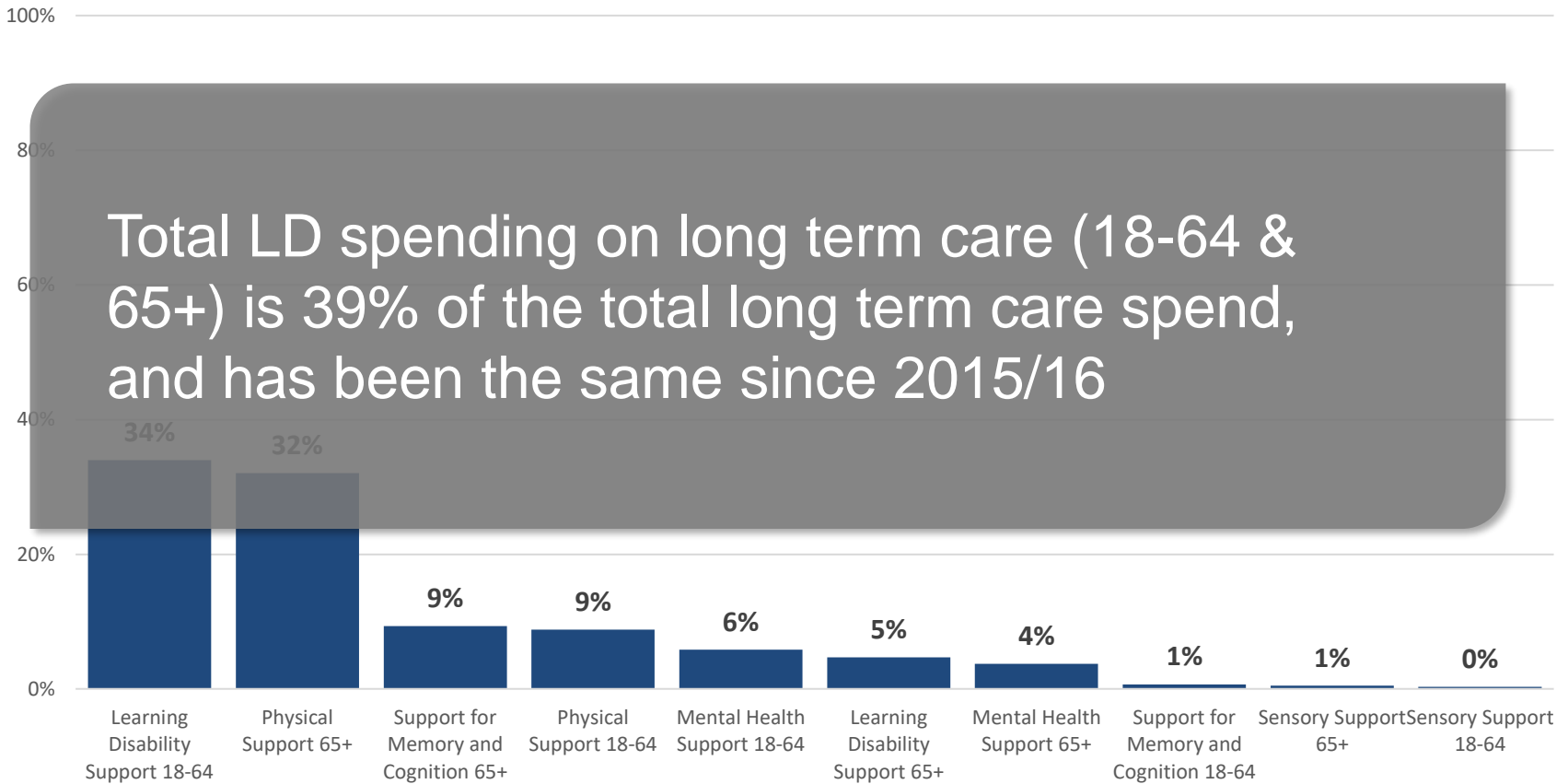
Long Term Care Cost Changes

Age	Activity	2020-21 £m	2021-22 £m	2022-23 £m	Year Change	Period Change
18-64	Physical Support	1,396	1,487	1,623	9%	16%
	Sensory Support	58	61	62	0%	6%
	Support for Memory and Cognition	99	115	127	10%	28%
	Learning Disability Support	5,493	5,692	6,259	10%	14%
	Mental Health Support	831	919	1,077	17%	30%
Subtotal	Total Long Term 18-64	7,877	8,274	9,147	11%	16%
65+	Physical Support	4,946	5,300	5,910	12%	19%
	Sensory Support	91	103	92	-10%	2%
	Support for Memory and Cognition	1,397	1,508	1,723	14%	23%
	Learning Disability Support	732	762	867	14%	18%
	Mental Health Support	583	620	686	11%	18%
Subtotal	Total Long Term 65+	7,748	8,292	9,278	12%	20%
Total	Total Long Term	15,625	16,566	18,426	11%	18%



Long Term Care Cost Percentages

Long Term Support - Percent of Costs by Activity

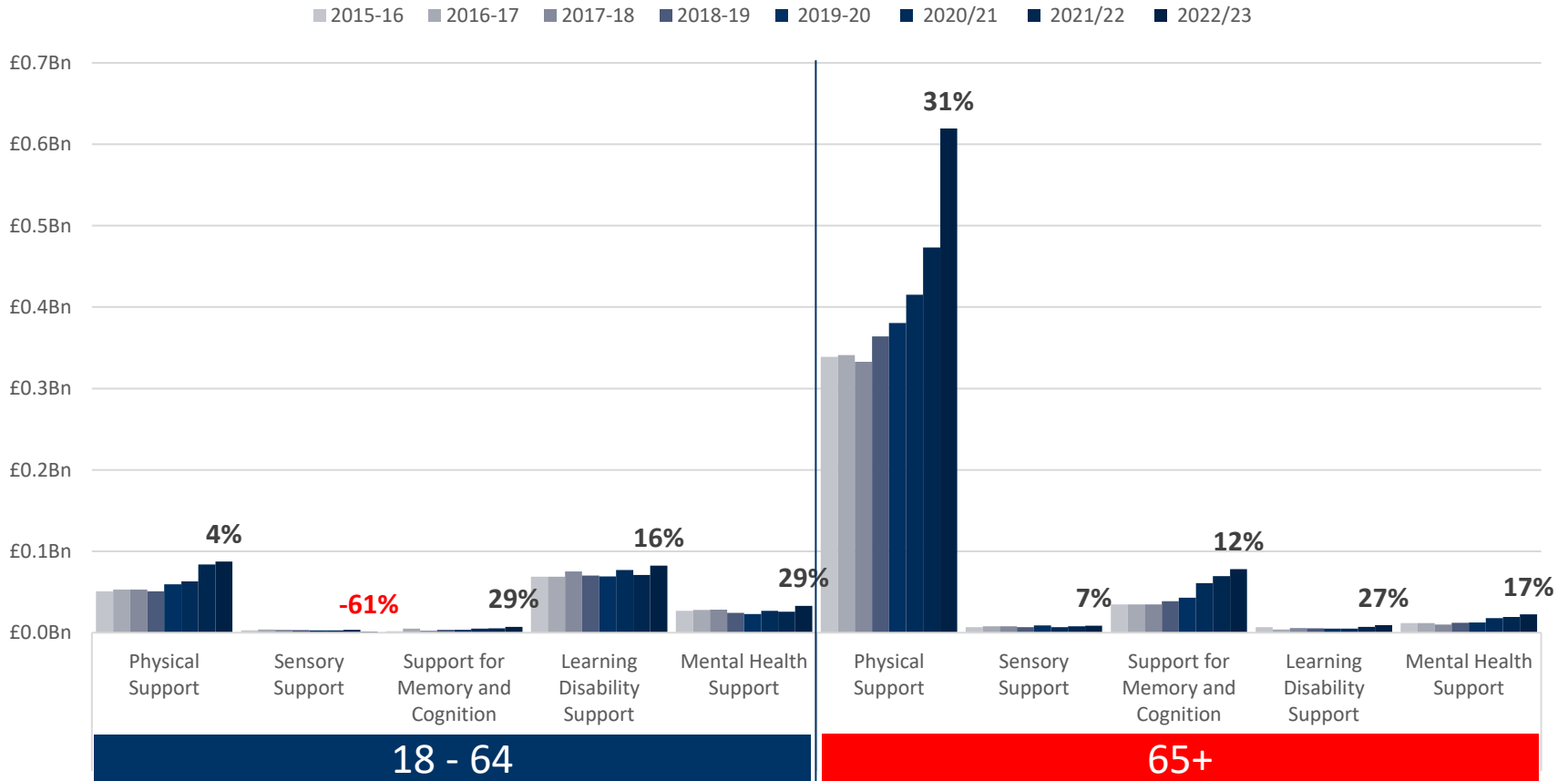




Extract

Short Term Care Cost Changes

Short Term Care



Short Term Care Cost Changes

Age	Activity	2020-21 £m	2021-22 £m	2022-23 £m	Year Change	Period Change
18-64	Physical Support	63	84	87	4%	41%
	Sensory Support	3	4	1	-61%	20%
	Support for Memory and Cognition	5	6	7	29%	46%
	Learning Disability Support	77	71	82	16%	2%
	Mental Health Support	27	26	33	29%	12%
Subtotal	Total Short Term 18-64	174	190	211	11%	20%
65+	Physical Support	415	473	619	31%	24%
	Sensory Support	7	8	9	7%	-9%
	Support for Memory and Cognition	61	70	78	12%	61%
	Learning Disability Support	5	7	9	27%	41%
	Mental Health Support	18	19	23	17%	53%
Subtotal	Total Short Term 65+	507	578	738	28%	28%
Total	Total Short Term	681	767	949	24%	26%



Extract

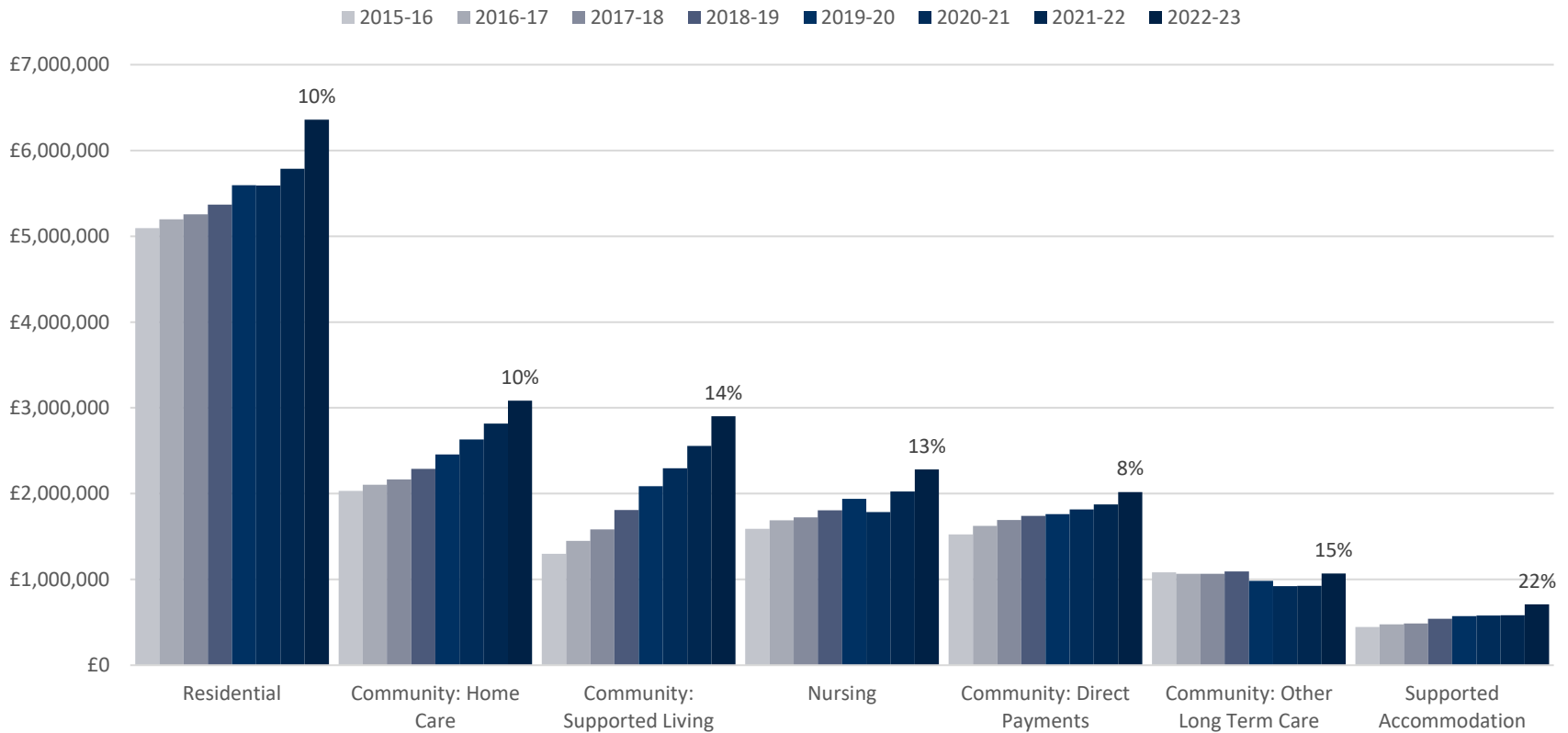
Other Cost Changes

- There are a few other notable cost changes:

Activity	2017-18 £m	2018-19 £m	2019-20 £m	2020/21 £m	2021/22 £m	2022/23 £m	Year Change	Trend
Commissioning and Service Delivery	1,078	1,104	1,121	2,339	1,985	1,333	-28%	
Social Care Activities	1,609	1,682	1,760	1,805	1,875	2,069	11%	
Information and Early Intervention	212	205	236	258	211	219	3%	
Assistive Equipment and Technology	203	205	200	210	203	238	17%	
Support to Carer	154	163	167	156	176	195	12%	
Support for Social Isolation/Other	88	103	117	124	122	121	-1%	
Substance Misuse Support	32	27	28	27	26	40	51%	
Asylum Seeker Support	27	21	23	17	28	103	443%	

Drivers of Long-Term Costs (all adults)

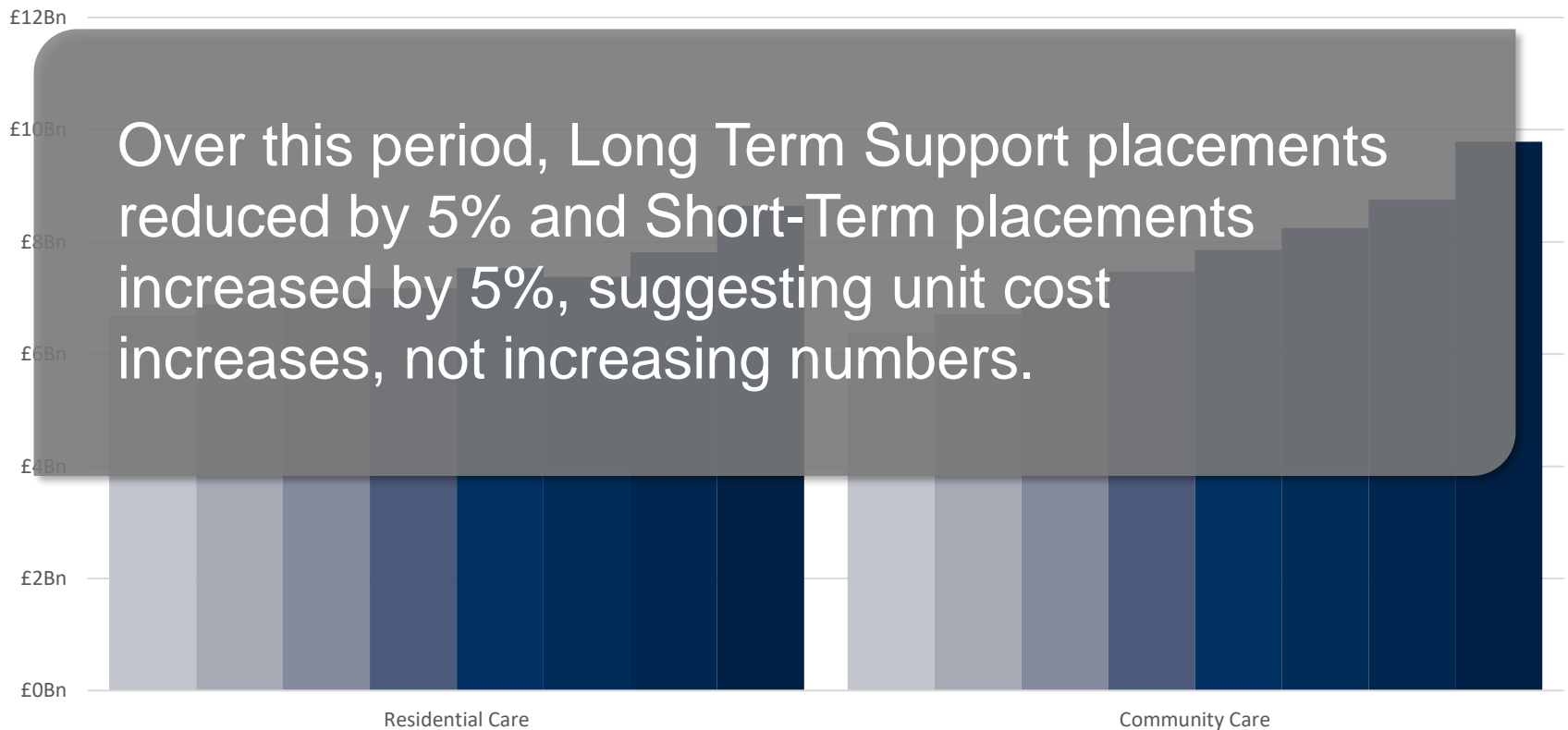
LTS Cost by Support Setting
(Percentage change from previous year)



Split between residential care and community care

Split between residential care (with and without nursing) and community care

■ 2015-16 ■ 2016-17 ■ 2017-18 ■ 2018-19 ■ 2019-20 ■ 2020-21 ■ 2021-22 ■ 2022-23





Extract

Long Term Care Cost Change (ages 18-64)

- By client group and support type, the change in costs for long term care (18-64) between 2021/22 and 2022/23 is as follows:

	Nursing	Residential	Supported Accom.	Direct Payments	Home Care	Supported Living	Other Long Term Care
Physical Support	8%	4%	12%	7%	14%	13%	6%
Sensory Support	3%	3%	-12%	-1%	5%	-10%	11%
Support with Memory & Cognition	22%	23%	18%	-3%	2%	11%	-36%
Learning Disability Support	-1%	5%	27%	8%	5%	12%	14%
Mental Health Support	10%	13%	14%	15%	10%	31%	11%



Long Term Care Cost Change (age 65+)

- The overall change in Long Term Care Costs between 2021/22 and 2022/23 is made up of the following changes

	Nursing	Residential	Supported Accom.	Direct Payments	Home Care	Supported Living	Other Long-Term Care
Physical Support	13%	12%	11%	7%	10%	1%	37%
Sensory Support	-8%	-2%	7%	-32%	-5%	3%	-47%
Support with Memory & Cognition	16%	14%	54%	6%	10%	36%	23%
Learning Disability Support	23%	8%	23%	30%	21%	12%	27%
Mental Health Support	14%	10%	0%	6%	2%	27%	2%



Unit Costs – Residential Care

- Unit costs are based on the total costs divided by the number of people and don't necessarily relate to actual fees:

		Physical Support	Sensory Support	Support with Memory and Cognition	Learning Disability Support	Mental Health Support
18-64	2020/21	£1,111	£1,231	£941	£1,726	£1,056
	2022/23	£1,225	£1,420	£1,056	£1,856	£1,122
	Change %	10%	15%	12%	8%	6%
65+	2020/21	£730	£742	£720	£1,155	£697
	2022/23	£791	£790	£785	£1,252	£753
	Change %	8%	7%	9%	8%	8%

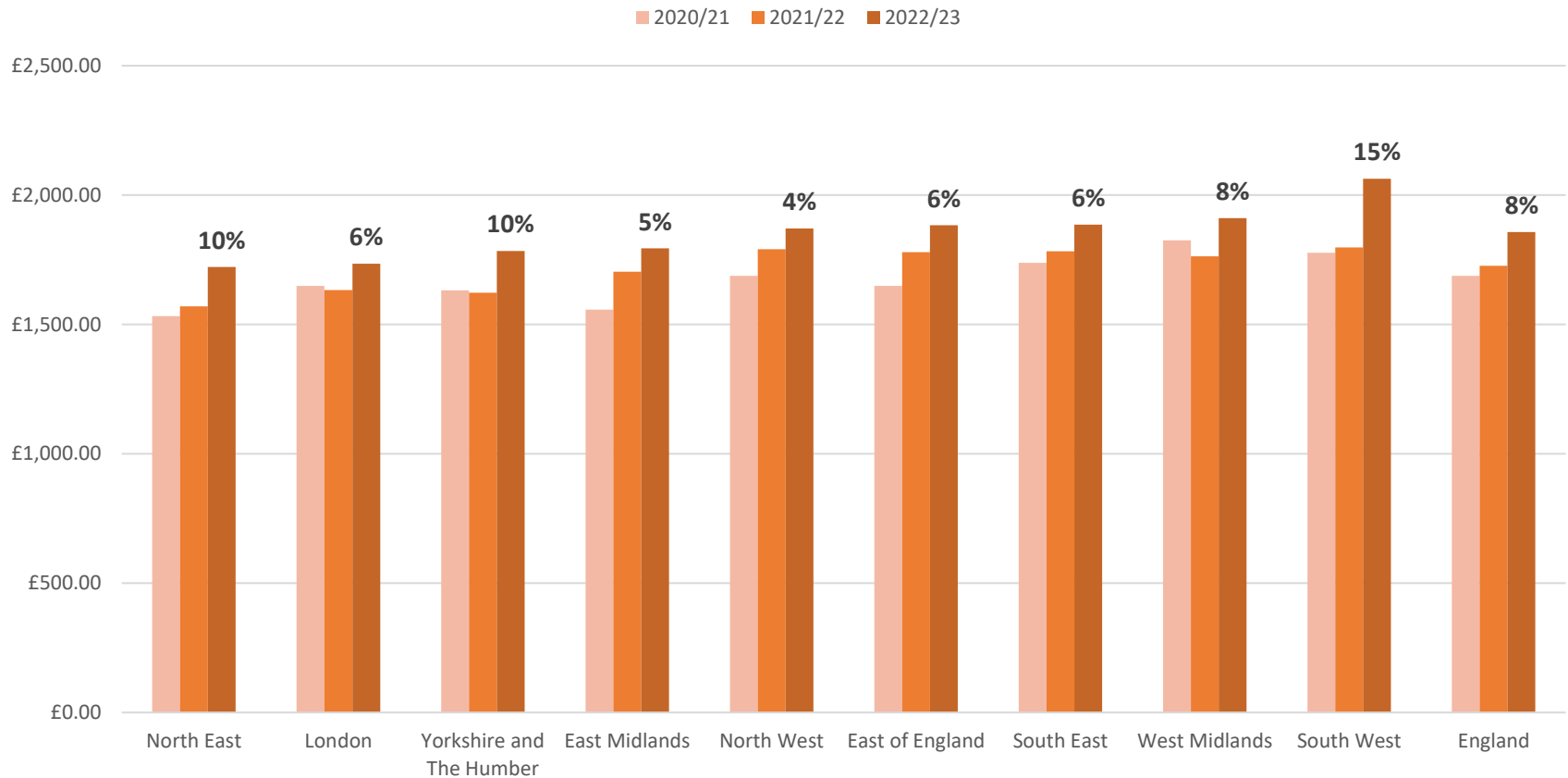
Unit Costs – Nursing Care

- The costs of learning disability support in nursing homes continues to increase:

		Physical Support	Sensory Support	Support with Memory and Cognition	Learning Disability Support	Mental Health Support
18-64	2020/21	£1,022	£1,054	£1,067	£1,568	£1,116
	2022/23	£1,153	£1,297	£1,210	£1,656	£1,237
	Change %	13%	23%	13%	6%	11%
65+	2020/21	£805	£818	£836	£792	£788
	2022/23	£901	£858	£922	£1,059	£918
	Change %	12%	5%	10%	34%	17%

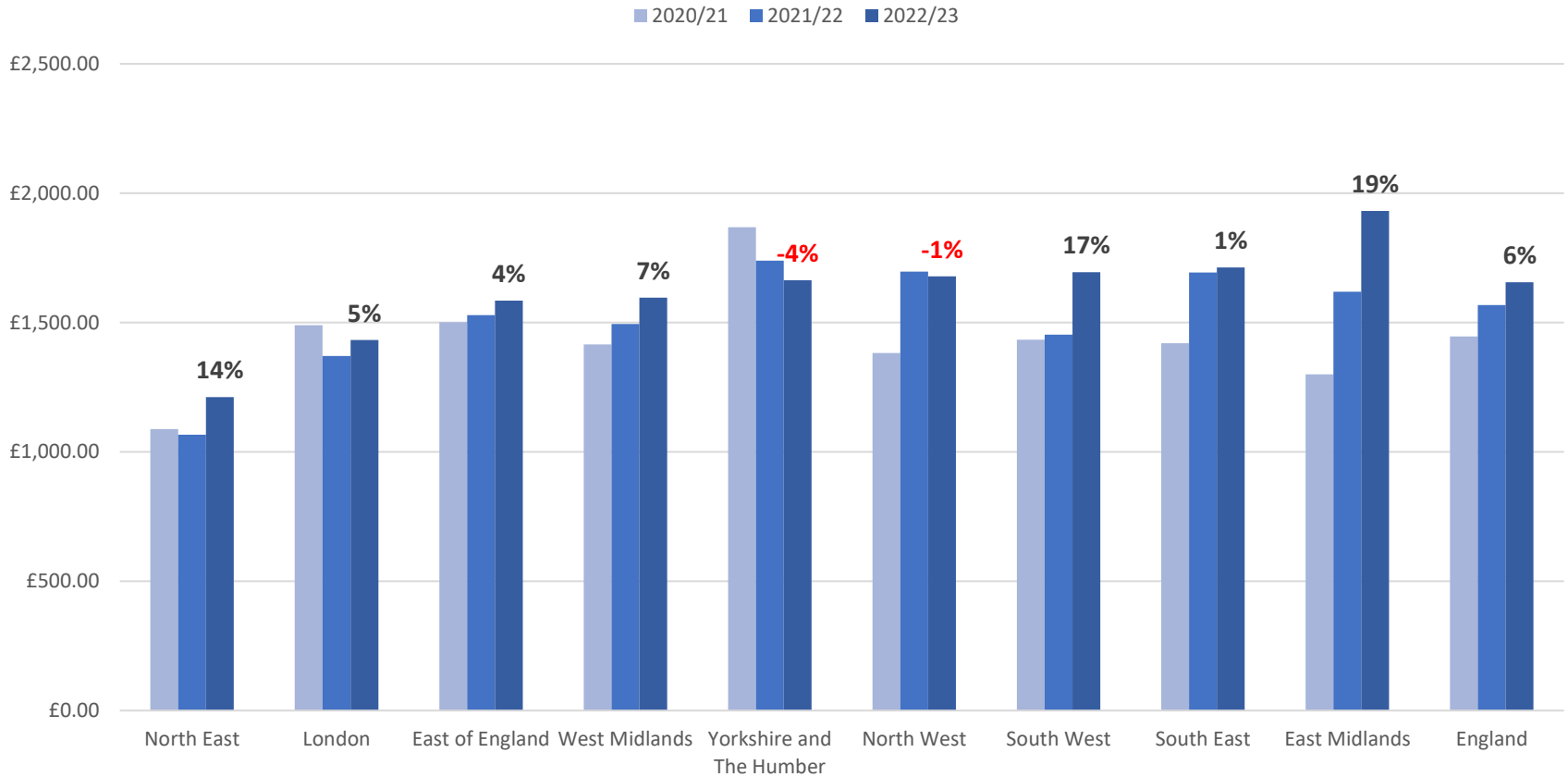
Residential Unit Costs by Region – LD 18-64

Learning Disabilities Residential by Region



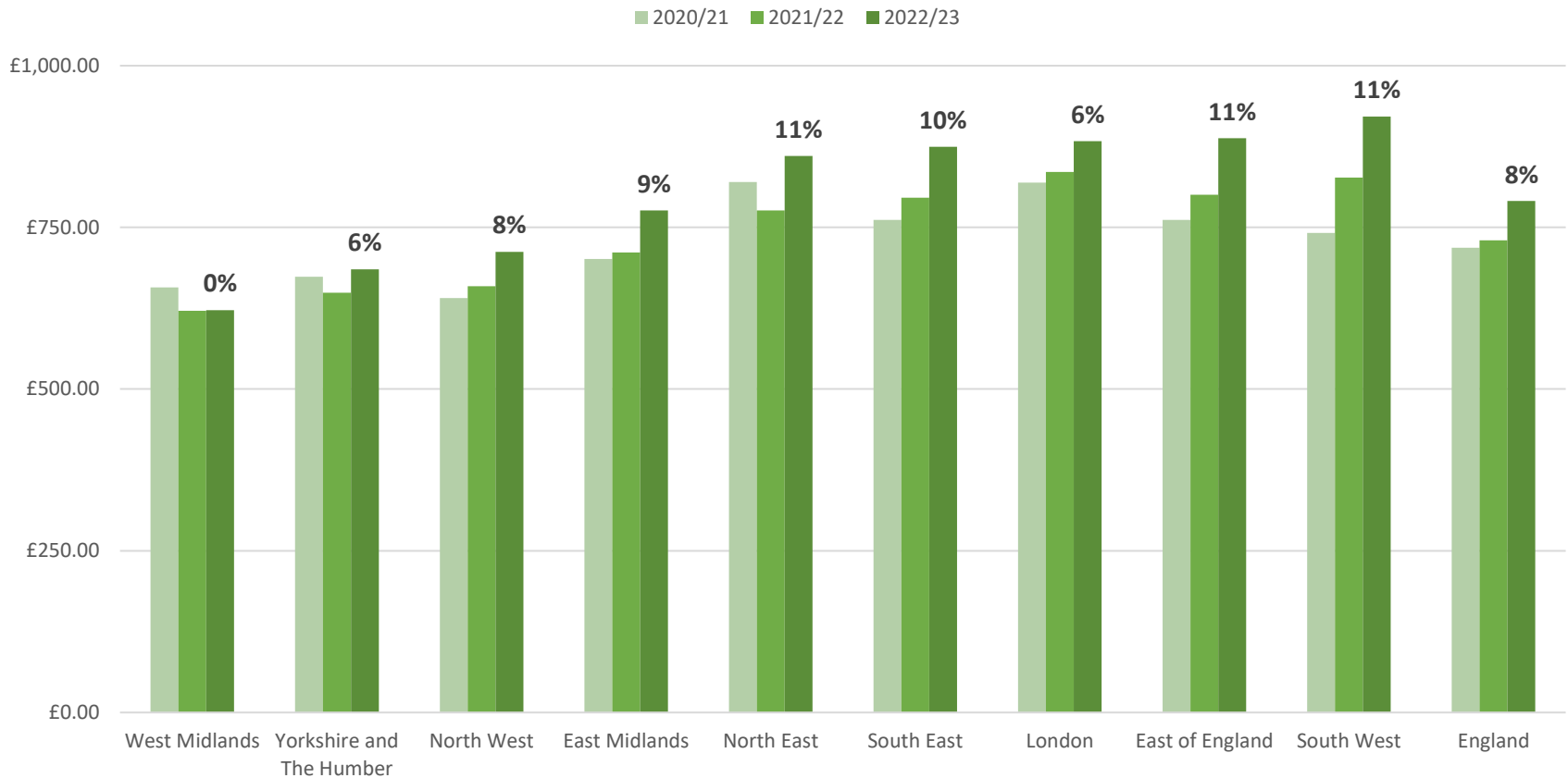
Nursing Unit Costs by Region – LD 18-64

Learning Disabilities Nursing by Region



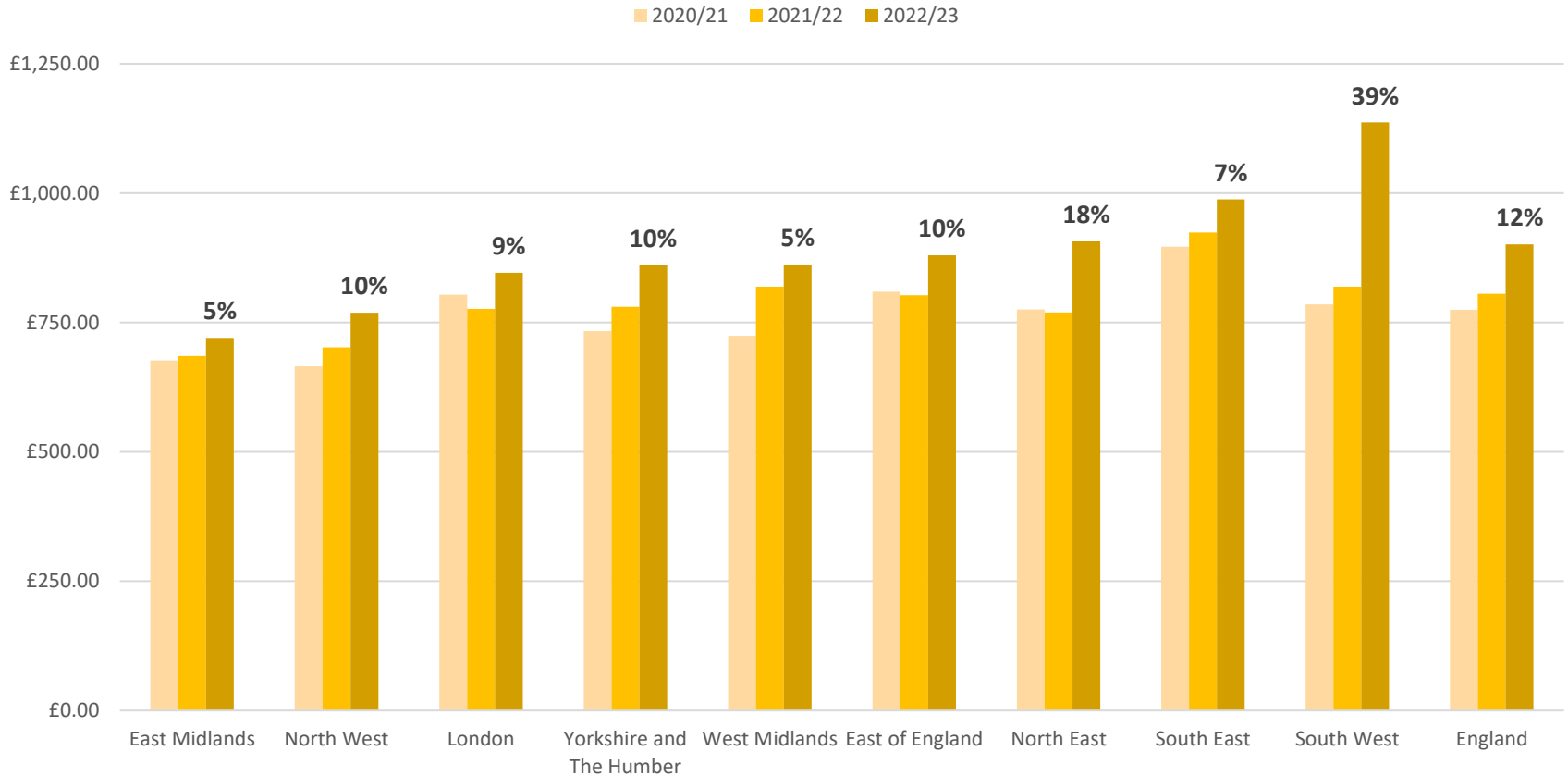
Residential Unit Costs by Region – Physical Support (Older Adults) 65+

Physical Support (65+) Residential by Region



Residential Unit Costs by Region – Physical Support (Older Adults) 65+

Physical Support (65+) Nursing by Region

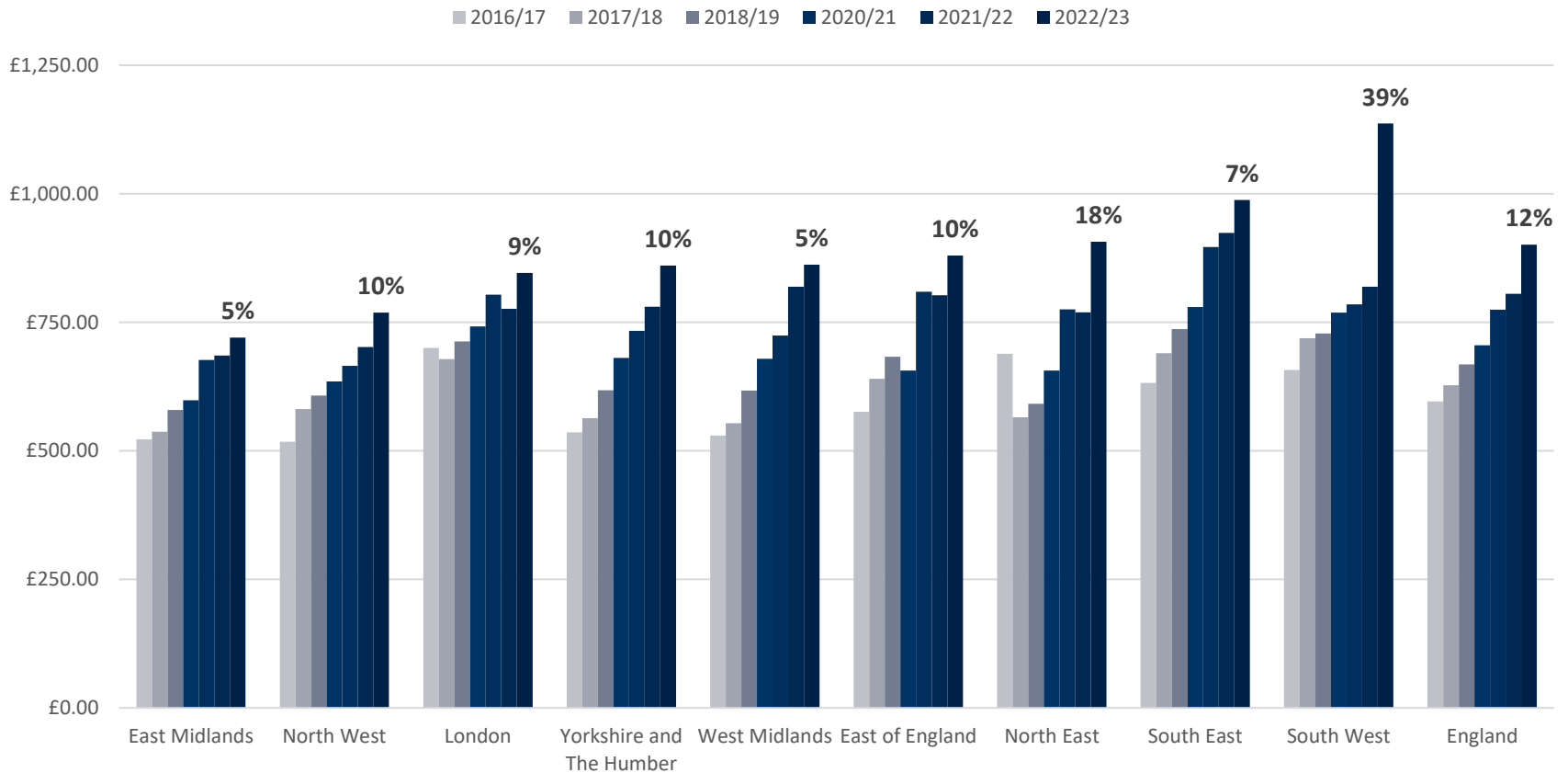




Extract

Nursing Unit Costs by Region – Physical Support (Older Adults) 65+

Physical Support (65+) Nursing by Region

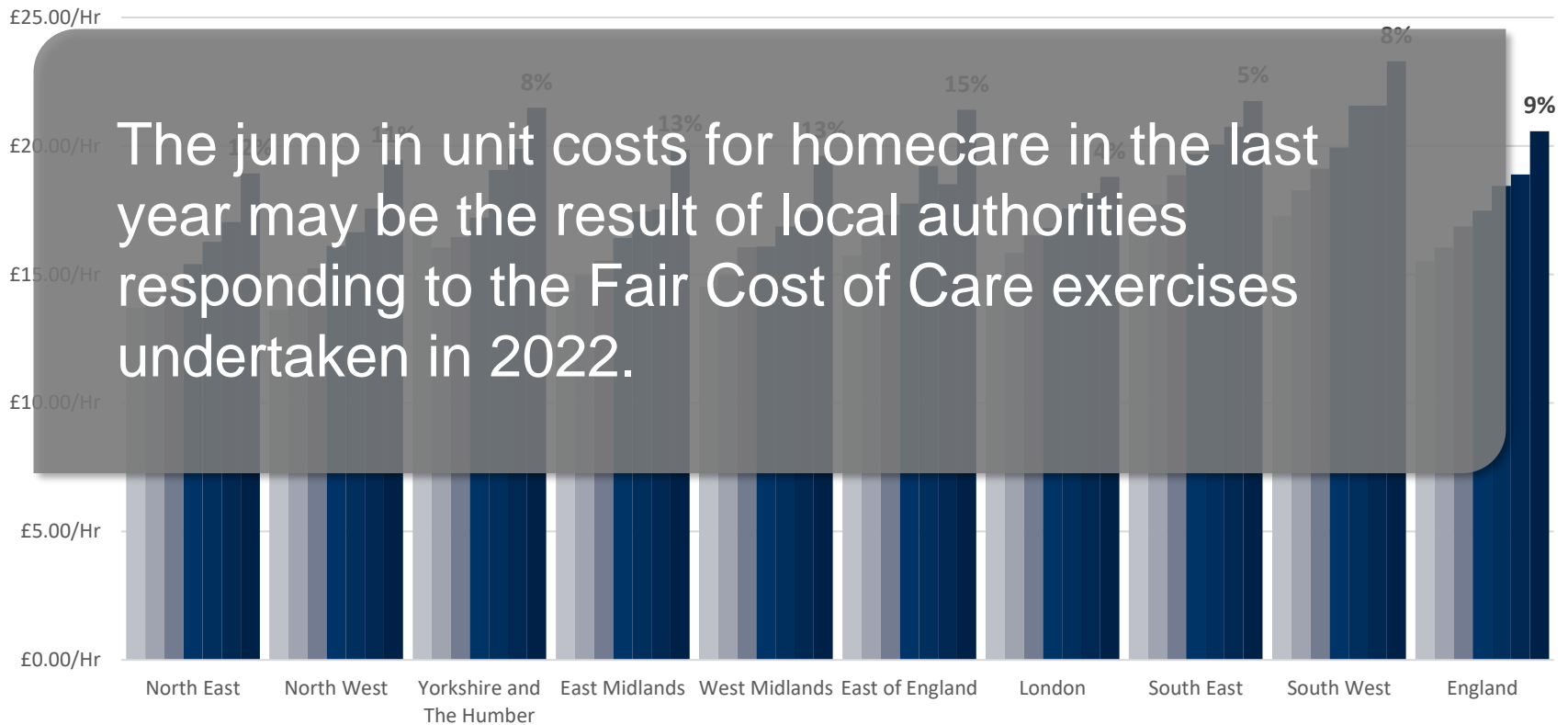




Home Care Unit Costs by Region

Home Care Hourly Rate by Region 2016-23

■ 2016-17 ■ 2017-18 ■ 2018-19 ■ 2020-21 ■ 2021-22 ■ 2022-23



Conclusions

- The unit cost of delivering adult social care continues to increase at a faster pace than the number of clients, a trend that local authorities are going to have to reverse if they are to address their financial issues, which Josh discusses later.
- The shift of finance from care homes to community-based support is continuing, and the number of care homes and care home beds continues to fall, which we will look at in a future briefing.
- Learning disability services continue to dominate adult social care funding. The shift away from care home support has not halted the increase in costs.
- There continue to be significant regional and local authority variances, suggesting that some areas are able to tackle cost issues. Will the financial pressure facing local authorities lead to a greater focus on cost savings?

7 Break



Briefing Dates for 2024

- **Thursday 25th April 2024**
- **Thursday 11th July 2024**
- **Thursday 17th October 2024**

Coffee from 10am for a 10.30am start

 Follow @CordisBright for social care news and information



CordisBright Limited

23/24 Smithfield Street, London EC1A 9LF

Telephone	020 7330 9170
Email	info@cordisbright.co.uk
Internet	www.cordisbright.co.uk